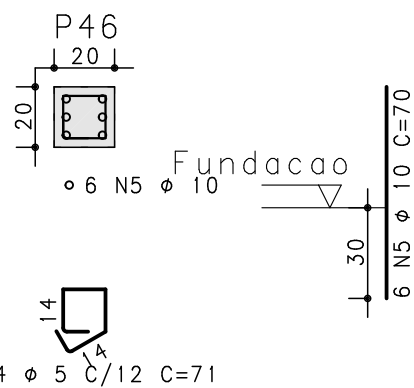
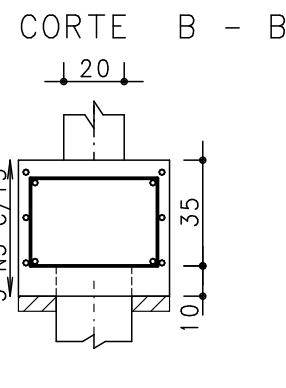
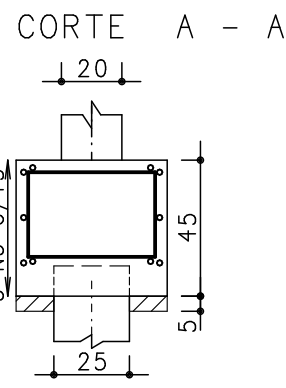
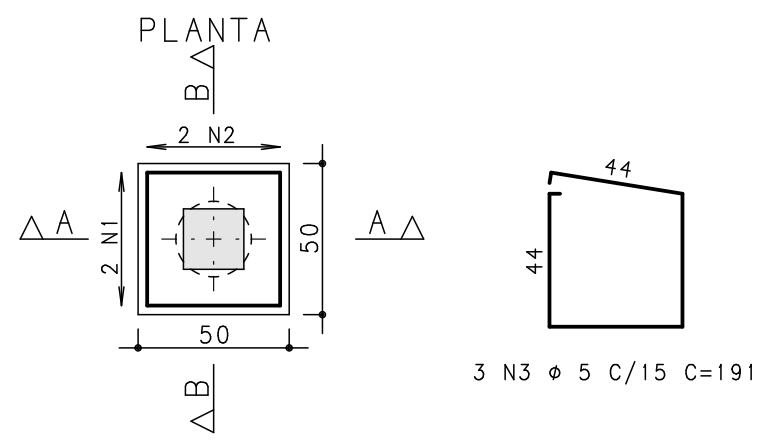
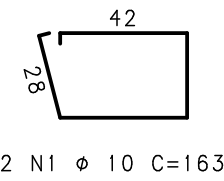


B46
(ESCALA 1:25)

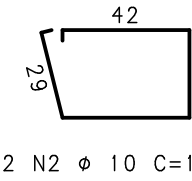


2 N4 ϕ 5 C/12 C=71

NÚMERO DE BARRAS DE ESPERA AUMENTADO PARA COMPENSAR O COMPRIMENTO PEQUENO DA ANCORAGEM.

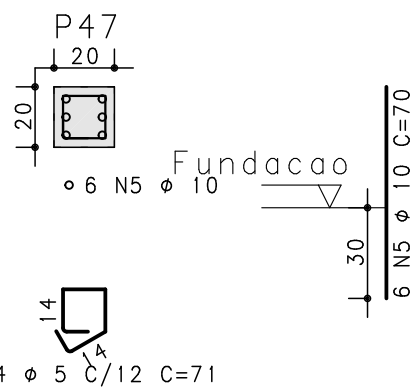
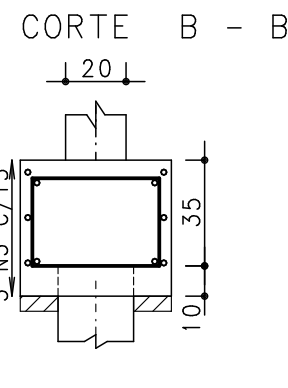
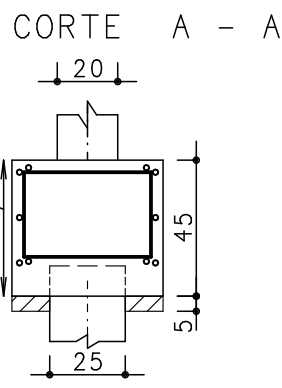
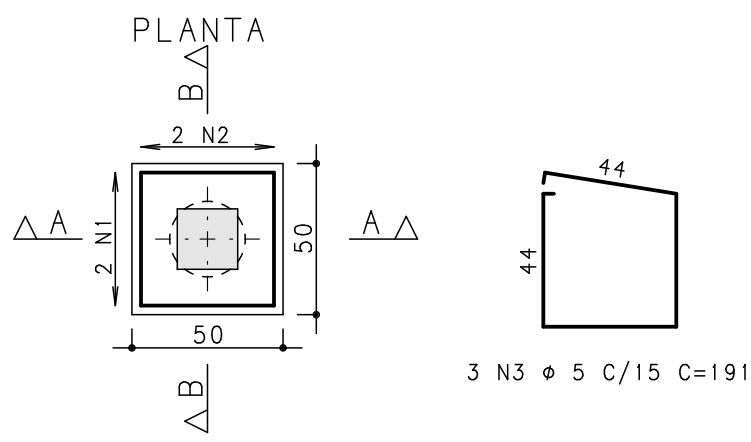


2 N1 ϕ 10 C=163



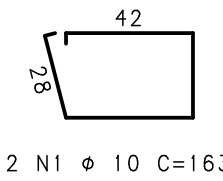
2 N2 ϕ 10 C=165

B47
(ESCALA 1:25)

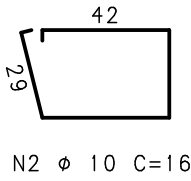


2 N4 ϕ 5 C/12 C=71

NÚMERO DE BARRAS DE ESPERA AUMENTADO PARA COMPENSAR O COMPRIMENTO PEQUENO DA ANCORAGEM.

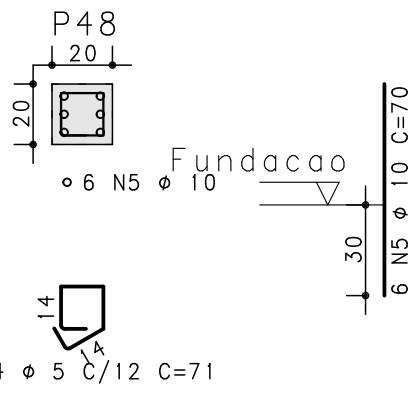
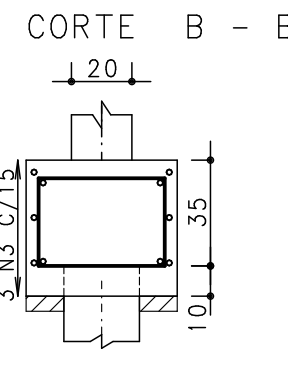
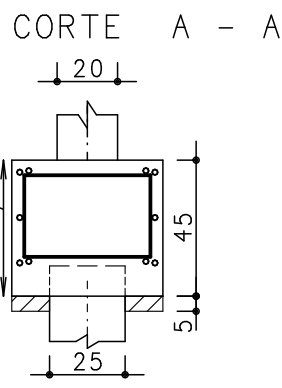
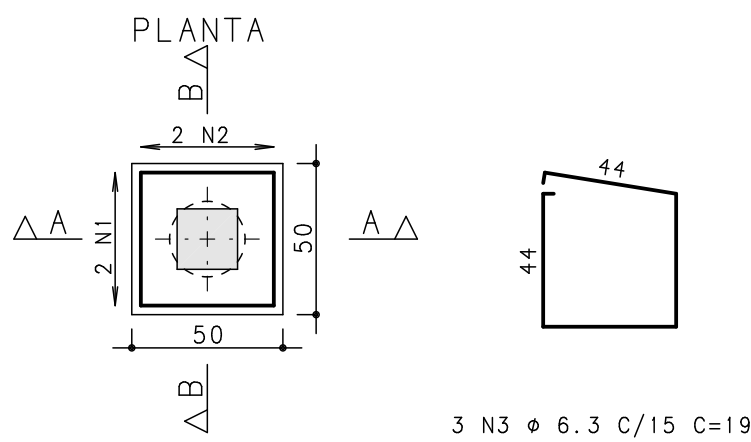


2 N1 ϕ 10 C=163



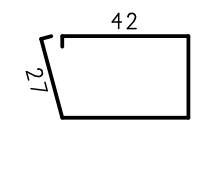
2 N2 ϕ 10 C=165

B48
(ESCALA 1:25)

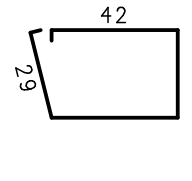


2 N4 ϕ 5 C/12 C=71

NÚMERO DE BARRAS DE ESPERA AUMENTADO PARA COMPENSAR O COMPRIMENTO PEQUENO DA ANCORAGEM.

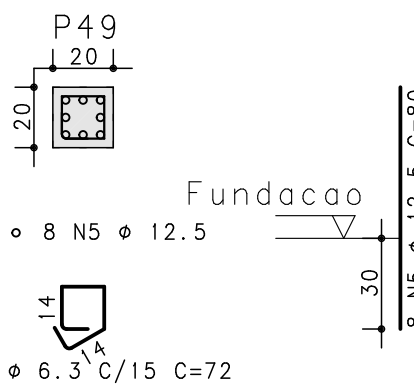
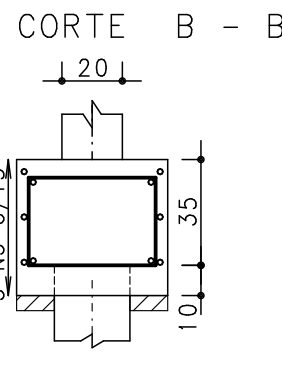
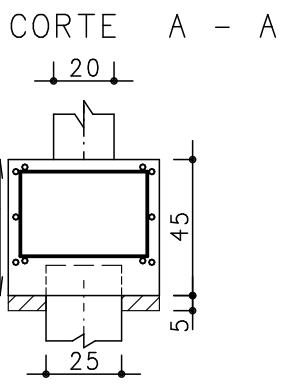
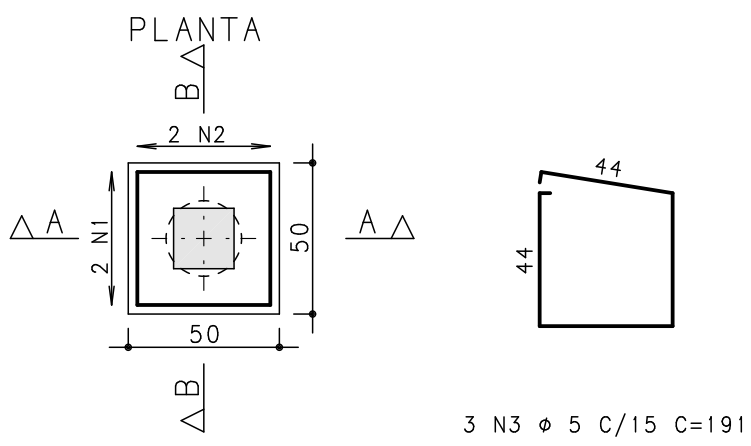


2 N1 ϕ 10 C=161



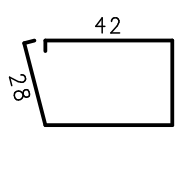
2 N2 ϕ 10 C=165

B49
(ESCALA 1:25)

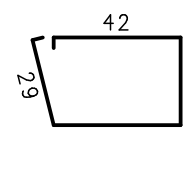


2 N4 ϕ 6.3 C/15 C=72

NÚMERO DE BARRAS DE ESPERA AUMENTADO PARA COMPENSAR O COMPRIMENTO PEQUENO DA ANCORAGEM.

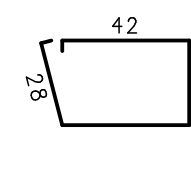
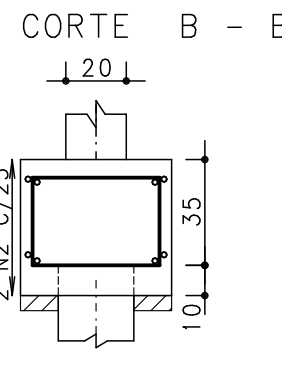
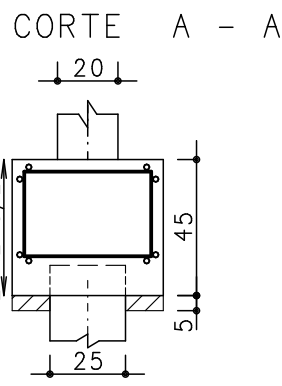
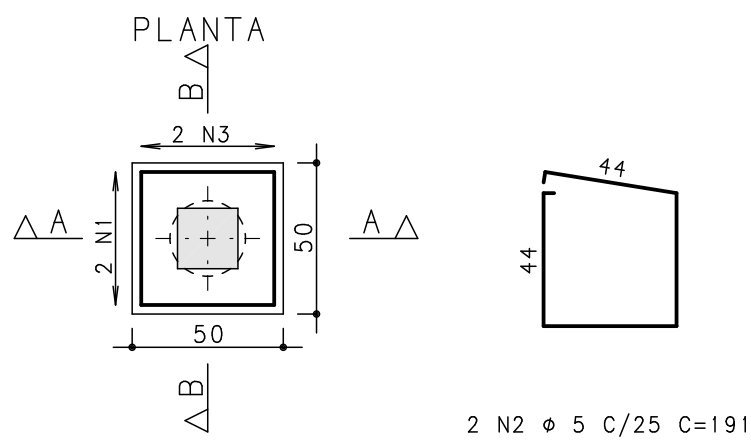


2 N1 ϕ 10 C=163

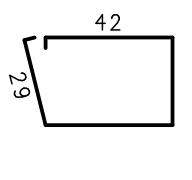


2 N2 ϕ 10 C=165

BPF1=BPF2=BPF3=BPF4
(ESCALA 1:25)



2 N1 ϕ 10 C=163



2 N3 ϕ 10 C=165

| AÇO | POS | BIT (mm) | QUANT | COMPRIMENTO | |
|--------------------------|-----|-------------|-------|--------------|---------------|
| | | | | UNIT (cm) | TOTAL (cm) |
| B46 | 50A | 1 | 10 | 2 | 163 |
| | 50A | 2 | 10 | 2 | 165 |
| | 60B | 3 | 5 | 3 | 191 |
| | 60B | 4 | 5 | 2 | 71 |
| | 50A | 5 | 10 | 6 | 70 |
| B47 | 50A | 1 | 10 | 2 | 163 |
| | 50A | 2 | 10 | 2 | 165 |
| | 60B | 3 | 5 | 3 | 191 |
| | 60B | 4 | 5 | 2 | 71 |
| | 50A | 5 | 10 | 6 | 70 |
| B48 | 50A | 1 | 10 | 2 | 161 |
| | 50A | 2 | 10 | 2 | 165 |
| | 50A | 3 | 6.3 | 3 | 192 |
| | 60B | 4 | 5 | 2 | 71 |
| | 50A | 5 | 10 | 6 | 70 |
| B49 | 50A | 1 | 10 | 2 | 163 |
| | 50A | 2 | 10 | 2 | 165 |
| | 60B | 3 | 5 | 3 | 191 |
| | 50A | 4 | 6.3 | 2 | 72 |
| | 50A | 5 | 12.5 | 8 | 80 |
| BPF1=BPF2=BPF3=BPF4 (X4) | | | | | |
| 50A | 1 | 10 | 8 | 163 | 1304 |
| 60B | 2 | 5 | 8 | 191 | 1528 |
| 50A | 3 | 10 | 8 | 165 | 1320 |

| RESUMO AÇO CA 50-60 | | | | |
|---------------------|-------------|--------------|--------------|--|
| AÇO | BIT (mm) | COMPR (m) | PESO (kg) | |
| 60B | 5 | 37 | 6 | |
| 50A | 6.3 | 7 | 2 | |
| 50A | 10 | 65 | 40 | |
| 50A | 12.5 | 6 | 6 | |
| Peso Total | | 60B = | 6 kg | |
| Peso Total | | 50A = | 48 kg | |



Rua Quinze de Novembro, 553/405
Pelotas - RS - CEP 96015-000
Telefone: (51) 32291500
e-mail: fernando@simch.com.br
e-mail: paulo@simch.com.br

Fernando Petrucci Gigante
Eng. Civil - CREA-RS 45232

Paulo Rogério Maffini Simch
Eng. Civil - CREA-RS 78208

| | | | |
|-----|------|-------|---------|
| 2 | | | |
| 1 | | | |
| 0 | | | |
| Rev | Data | Autor | Assunto |

| | | | | | |
|-----------|--------|--|--------|----------|--|
| CONCRETO | | SOBRECARGA PREVISTA | | OBRA N.º | |
| fck = 250 | | kgf/cm2 | | 0001 | |
| CLIENTE | | SECRETARIA DA SAÚDE-PELOTAS | | DES. N.º | |
| OBRA | | UBS Sanga Funda | | 009 | |
| TÍTULO | | Fundação Blocos de Coroamento 6-6 | | REV. N.º | |
| | | B46 / B47 / B48 / B49 BPF1=BPF2=BPF3=BPF4 | | 00 | |
| DATA | ESCALA | DESENHO | COORD. | ENG.º | |
| 2/08/2015 | 1:25 | UBS-FUN-FUN-009-R00 | | | |